

Anchor Lamina America, Inc.



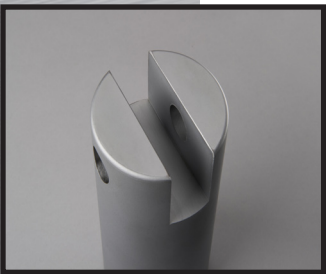
IEM[®]



Lamina[®] LEMPCO[®]

SOLUTIONS TO FIT YOUR SPECIAL APPLICATIONS

With a variety of features and options available, Special Components are manufactured to customer specifications. Whether modifying a standard part or creating a new part to your exact requirements, our extensive manufacturing capabilities have the solutions for all your metal stamping, plastics molding and special machinery applications.



MANUFACTURING CAPABILITIES:

- Finished outside diameters from $\frac{5}{8}$ " to 10"; lengths from 5" to 60"
- Finished inside diameters
 - Hardened Steel – $\frac{1}{2}$ " ID up to 4"; from $3\frac{5}{8}$ " ID up to 14"
 - Bronze Plated Steel – $\frac{1}{2}$ " ID up to 4"; from $4\frac{1}{2}$ " ID to 9" length
 - Solid Bronze (w/wo graphite plugs) – $\frac{5}{8}$ " ID to 4" length; from $6\frac{1}{8}$ " ID to $7\frac{7}{8}$ " length
 - Tolerance capabilities determined by ratio of diameter to length
- 3-Axis milling with part lengths up to 48"
- 5-Axis prismatic machining
- Surface grinding steel up to 96" length x 17" wide
- Hard turning
 - Maximum outside diameter: $3\frac{3}{4}$ "
 - Minimum inside diameter: $\frac{1}{2}$ "
- Heat Treating – alloy and low carbon steels up to 62 HRC (size and carbon content dependent)
- Induction hardening
 - 1050 steel, up to $5\frac{1}{4}$ " diameter and hardened to 58/62 HRC
 - 52100 steel, up to $3\frac{3}{4}$ " diameter and hardened to 58/62 HRC
- Details from a variety of tool steels (for example: A2, S7, D2, H13, O6)
- Plating Services Available:
 - Copper Bronze Plating up to .024 in thickness
 - Flash Bronze Plating up to .001 in thickness

CALL: 248-489-9122 • TOLL FREE: 800-652-6462 • FAX: 800-406-4410

Email: sales@lamina.com

www.lamina.com